

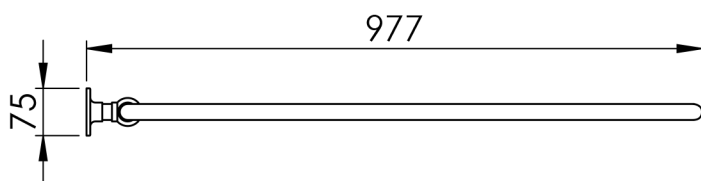
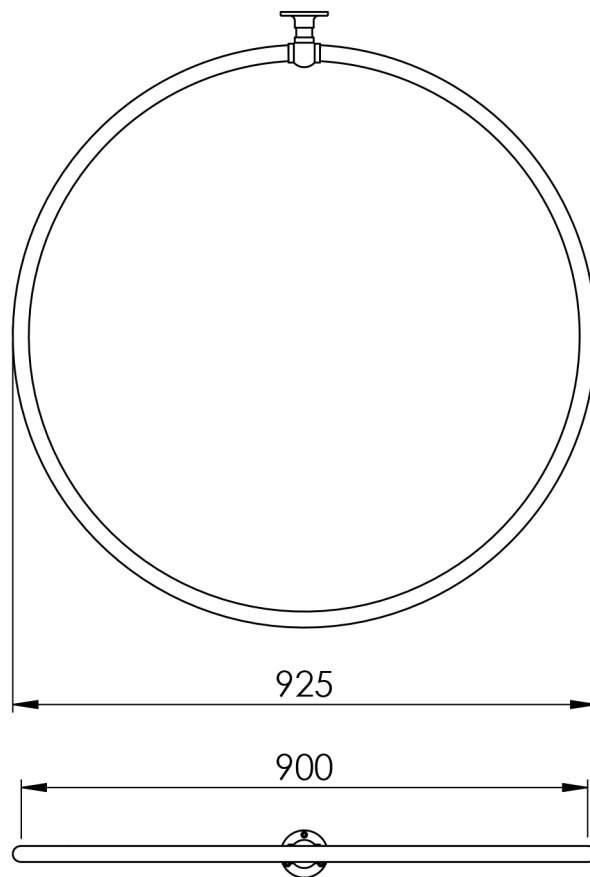
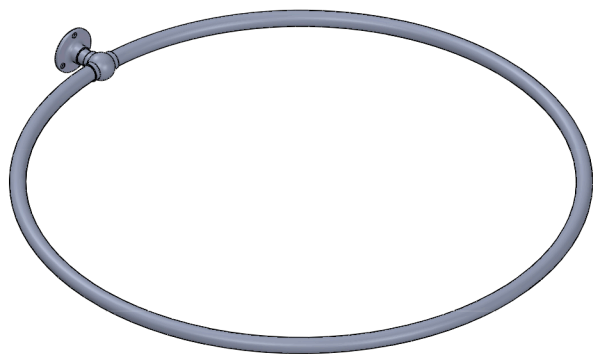
Circular Ceiling Mounted SCR5.2 75x925

Height: 75
Width: 925
Depth: 977
Weight HO: kg
EO: kg

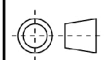
Tube ϕ : 25.4
Pipe Centres / Face-Face Cons: n/a
Elec. element if specified: n/a
Output @ 50° C Δ T Watts: n/a
BTUs: n/a

All dimensions in millimetres

Manufactured from ISO/CEN CuZn30As (BS CZ126) brass tube



Vogue UK Ltd. reserve the right to alter specifications without prior notice.
ALL MEASUREMENTS ARE NOMINAL DIMENSIONS ONLY, AND ARE NOT BINDING.



SCALE 1:12

VOGUE
TOWEL WARMERS & RADIATORS

Strawberry Lane, Willenhall
West Midlands WV13 3RS
Tel: 01902 387000 Fax: 01902 387001
e-mail:sales@vogueuk.co.uk www.vogueuk.co.uk