

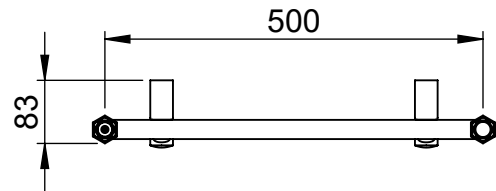
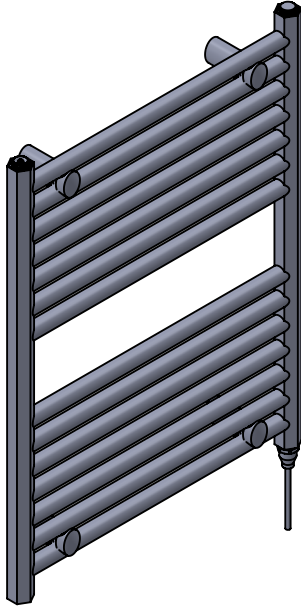
OG021 700x532

Height: 700
Width: 532
Depth: 83
Weight HO: kg
EO: kg

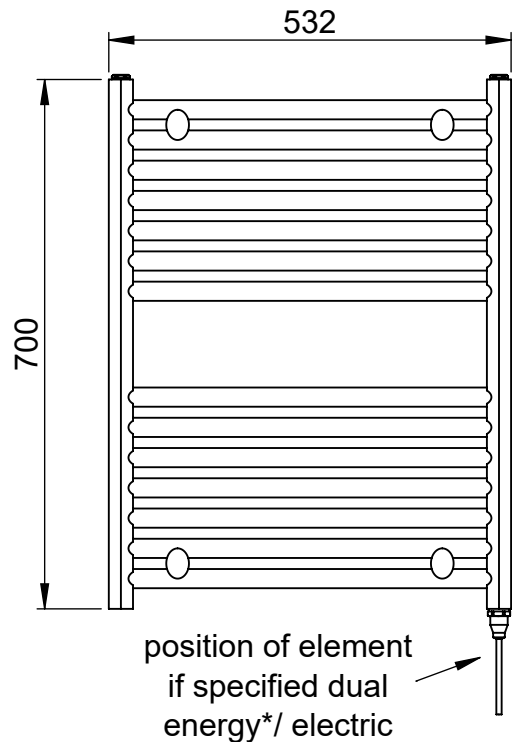
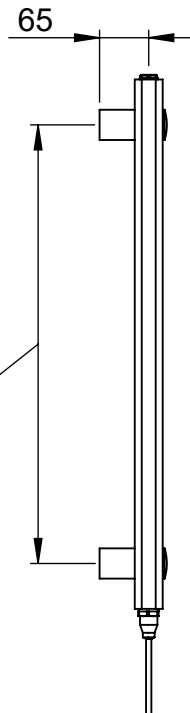
Tube ϕ : 32 Hex + 25.4
Pipe Centres: 500
Elec. element if specified: 125
Output @ 50°C Δ T Watts: 354
BTUs: 1208

All dimensions in millimetres

Manufactured from ISO/CEN CuZn36As (BS CZ126) brass tube

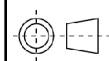


Brackets extendable by a further 20mm



*Dual energy models require a conversion-tee, consult relevant drawing for details.

Vogue UK Ltd. reserve the right to alter specifications without prior notice.
ALL MEASUREMENTS ARE NOMINAL DIMENSIONS ONLY, AND ARE NOT BINDING.



SCALE 1:10

VOGUE
TOWEL WARMERS & RADIATORS

Strawberry Lane, Willenhall
West Midlands WV13 3RS
Tel: 01902 387000 Fax: 01902 387001
e-mail:sales@vogueuk.co.uk www.vogueuk.co.uk